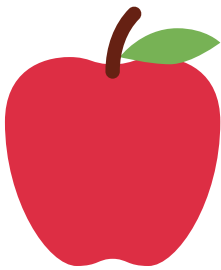
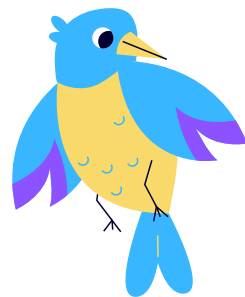


Match Letters to Letter Sounds

Aa



Bb



Cc

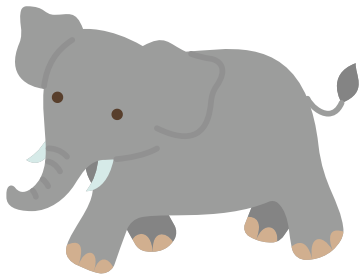


Dd

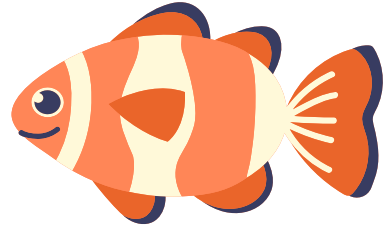


Match Letters to Letter Sounds

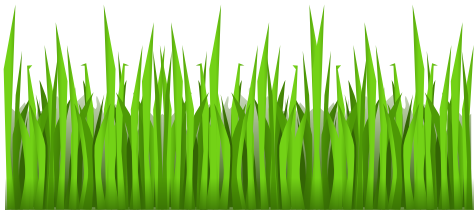
Ee



Ff



Gg

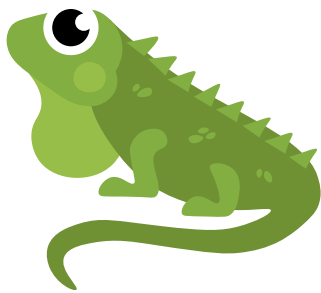


Hh

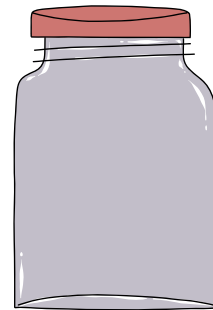


Match Letters to Letter Sounds

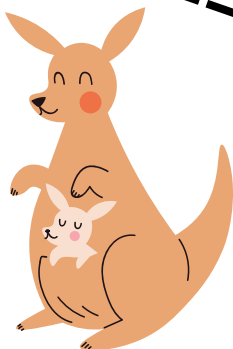
Ii



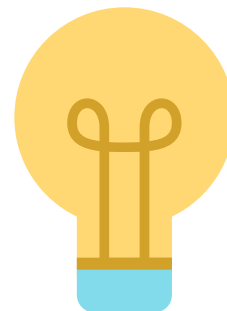
Jj



Kk



Ll



Match Letters to Letter Sounds

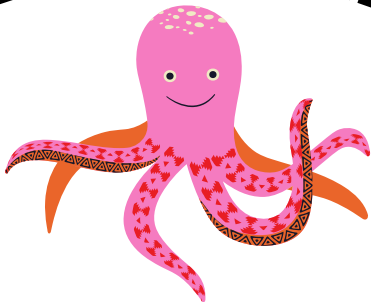
Mm



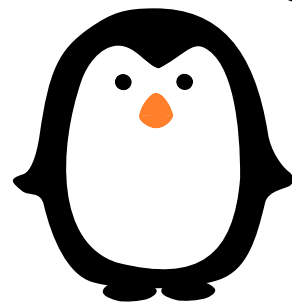
Nn



Oo

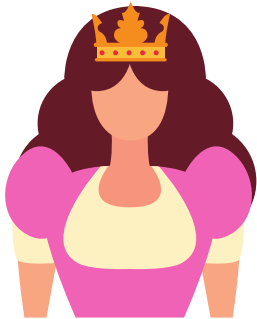


Pp



Match Letters to Letter Sounds

Qq



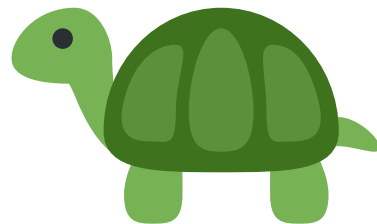
Rr



Ss



Tt



Match Letters to Letter Sounds

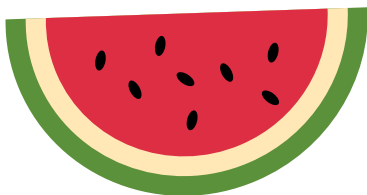
Uu



Vv



Ww

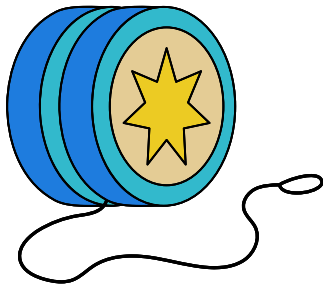


Xx



Match Letters to Letter Sounds

Yy



Zz

